

SNOTTY

Battery Operated
Nasal Aspirator

USER MANUAL SNOTTY THREE

- W**aterproof and washable
- R**educed noise level
- E**rgonomic design
- L**arge mucus cup with easy clean-up
- S**tands upright
- 2** sizes of silicone tips
- B**attery operated (AA)
- N**o hidden costs
- N**o ongoing replacement parts required



INTENDED USE : Quickly and gently removes excess mucus from your child's nasal cavity



TGA Registered

Warnings

Before using this aspirator, please read all the instructions in this manual. Please keep this manual for reference as it contains important information.

1. Do not allow children to play with the aspirator as it is not a toy. Keep the aspirator out of children's reach to prevent small parts and accessories from being swallowed by them accidentally.
2. This aspirator is designed to clean noses; do not use it in mouth or ears.
3. Always clean the aspirator if the accumulated volume of mucus is over the safe capacity of the mucus cup (about 4 mL). Always clean and dry thoroughly before and after each use, please refer to the section of "Clean Instructions."
4. Do not insert the silicone tip into the nostril too deeply, just to seal the nostril.
5. Do not use it on the baby for a long time, a few seconds in each nostril will be enough.
6. Do not use the aspirator if there are any wounds, symptoms of inflammation or bleeding in or near the nose.
7. In the case of infection, fever, nasal irritation, or hemorrhage, please stop using the aspirator and consult your health professional.
8. This aspirator is restricted for personal use only.
9. The silicone tip is the applied part.
10. No modifications of this aspirator are allowed. Do not attempt to disassemble the aspirator farther than instructed in this manual.
11. Replace the batteries when the suction power becomes weak during use.
12. Duty cycle : 30 seconds ON / 2 minutes OFF.
13. Your product warranty is 12 months on your SNOTTY THREE nasal aspirator but the expected service life of the device is three years under normal usage.

Battery Warnings

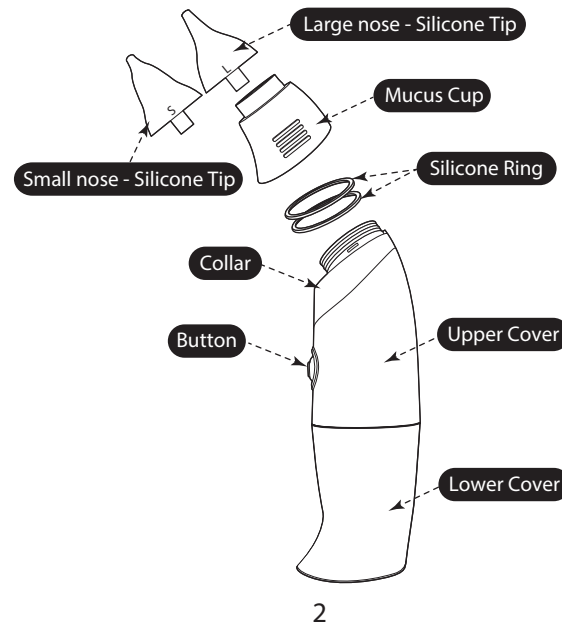
1. Use alkaline batteries only.
2. Only batteries of the same or equivalent type as recommended should be used.
3. Do not mix alkaline, standard (carbon-zinc), or rechargeable (nickel-cadmium) batteries.
4. Do not use a mix of used and new batteries.
5. Batteries should be inserted with the correct polarity.
6. Used and exhausted batteries should be removed from the device.
7. Be sure that all contact surfaces are clean before installing batteries.
8. There is a risk of explosion if the batteries are replaced by an incorrect type.
9. Remove batteries if the device will not be used for a long period of time; batteries may be removed easily through the hole of the battery compartment.



Contents

- ① 1 Main Unit
- ② 2 Sizes of Silicone Tips (small and large)
- ③ 1 Instruction Manual
- ④ 2 Spare Silicone Rings

Parts Description



Notes

Guidance and manufacturer's declaration

SNOTTY THREE electromagnetic emissions.

Emissions	Compliance	Electromagnetic environment - guidance
RF emissions CISPR 11	Group 1	SNOTTY THREE uses RF energy only for its internal function. Therefore, its RF emissions are very low and are not likely to cause any interference in nearby electronic equipment.
RF emissions CISPR 11	Class B	SNOTTY THREE is suitable for use in all establishments, including domestic establishments and those directly connected to the public low-voltage power supply network that supplies buildings used for domestic purposes.
Harmonic emissions IEC 61000-3-2	Not applicable	
Voltage fluctuations/flicker emissions IEC 61000-3-3	Not applicable	

How to aspirate your child

Some basic handy steps how to better aspirate your child. Following these steps will ensure your SNOTTY works quickly, efficiently and is gentle.

	Step	Comments
One	Hydrate your child	Always make sure your child is well hydrated in particular when they are down with cold or flu and when the weather is warm.
Two	Humidify	Run a humidifier in your house, or even the child's bedroom, to avoid dry mucus.
Three	Use nasal saline spray	The saline will loosen up the mucus and enable better extraction. Spray some saline into child's nose 1-2 minutes before aspiration.
Four	Aspirate in bath or shower	Your SNOTTY THREE is fully waterproof, so why not take the advantage of the additional vapors in the shower, bath or even swimmingpool.
Five	Consult	ALWAYS consult a health professional if you are uncertain, if your child has undergone any type of treatment, surgery or is on medication, or the duration of the illness is too long.

Become a SNOTTY distributor

SNOTTY is offering opportunities to stay at home parents to earn extra income in three easy steps!

	Your three easy steps to earn extra money
Sign up	Sign up to become a distributor. You do this via email we do not require contracts or lengthy legal procedures. You DO NOT have to have a business or your own ABN, we will set up an account for you anyhow and allow you to purchase aspirators from us at wholesale prices. We will promote you on our web directing local customers to you!
Order	Place your order/orders whenever you like, as often or seldom as required. Order any aspirators you like, we do not have set packages, if you only like to sell one model that is fine.
Sell	Once you receive your stock you are ready to sell and make a profit. Build your network, sell with your local community, markets, friends and relatives, sell on ebay or even via facebook.

* For sales via internet pricing guidelines do apply
** Stock levels and availability may vary with seasons and customer demand, as such not all models may be available at all times

SNOTTY independent distribution network is thriving, to become a distributor please email us on:

info@snotty.com.au

Your chance to increase your income is just an email away!





APPLIED STANDARDS:

This device conforms to the provisions of the EC directive MDD (93/42/EEC). The following standards apply to the design and manufacture of the device:

- IEC / EN 60601-1 Medical electrical equipment – Part 1: General requirements for basic safety and essential performance
- IEC / EN 60601-1-2 Medical electrical equipment – Part 1-2: General requirements for basic safety and essential performance – Collateral standard: Electromagnetic compatibility - Requirements and tests
- IEC/EN 60601-1-6 Medical Electrical Equipment – Part 1-6: General Requirements for Safety - Collateral Standard: Usability
- IEC 60601-1-11 Medical electrical equipment – Part 1-11: General requirements for basic safety and essential performance – Collateral standard: Requirements for medical electrical equipment and medical electrical systems used in the home healthcare environment
- EN ISO 10993-5 Biological evaluation of medical devices – Part 5: Tests for in vitro cytotoxicity
- EN ISO 10993-10 Biological evaluation of medical devices – Part 10: Tests for irritation and delayed-typed hypersensitivity

2016
MANUFACTURER
Perpetus Pty Ltd
ABN 49 142 811 069
T/A SNOTTY
PO Box 111
Labrador QLD 4215
Australia
E-mail: info@snotty.com.au

INTERNATIONAL DISTRIBUTORS
New Zealand
Ultimax Company Limited
E-mail: info@snotty.co.nz
Malaysia
Infomedia
E-mail: cs@snottydistribution.com

CE 0120 WASTE FROM ELECTRICAL AND ELECTRONIC EQUIPMENT (WEEE)

LOT BATCH CODE
SEE THE LOT LABEL AT THE BOTTOM OF THE DEVICE

CONSULT INSTRUCTIONS FOR USE

Type BF applied part

IP22 Protection against solid foreign objects of 12.5mm ϕ and greater and protection against vertically falling water drops when enclosure tilted up to 15°



SNOTTY THREE -20160401-V1

Instructions for Use

- Separate the upper cover away from the lower cover in a straight direction. Do not bend the covers by brute force as bending will cause damage.
- Insert 2 x 1.5V AA alkaline batteries with the correct polarity as shown.
 Remove batteries if the device will not be used for a long period of time.
- Check to make sure that the two silicone rings are properly seated on the grooves. Close the covers until you hear a "clicking" sound.

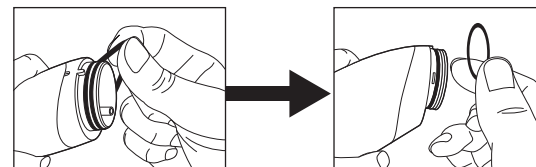
- Choose the suitable silicone tip based on the size of patient's nostrils.
- Be sure to place the silicone tip securely on the mucus cup.
- Gently insert the silicone tip into patient's nostril. Do not insert it too deeply, but enough to seal the nose.
- Press the button for a few seconds to collect mucus. Stop pressing the button when finished using the aspirator and the power will stop.

- If the accumulated volume of mucus is near the safe capacity of the mucus cup (about 4 mL), follow the cleaning instructions on the next page. Do not use the aspirator if the extracted mucus level is near the opening channel (indicated by the arrow).

5

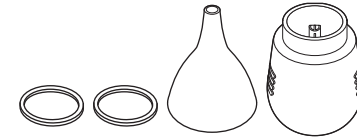
Cleaning Instructions

- Be sure that the upper and lower covers are closed firmly before cleaning the aspirator.
- Remove the silicone tip.
- Hold the mucus cup with a firm grip between thumb and index finger.
- Bend the mucus cup gently in a downward direction to remove it from the collar.
- The silicone rings do not have to be removed and washed each time you use the aspirator, but it is recommended this is done occasionally.

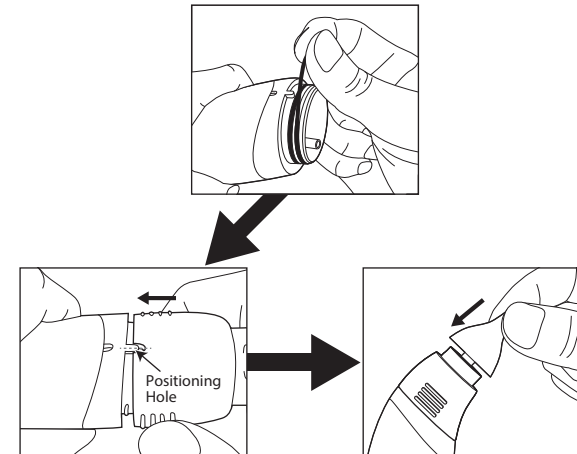


6

- Wash the parts thoroughly with clean water and soap. Rinse the collar under the tap. Dry the parts before assembly.



- Reassemble all parts as shown below:



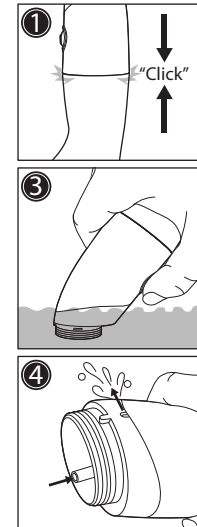
*Properly align the positioning hole on the mucus cup.

- Be sure that all parts fit tightly together on the device.

7

When the accumulated volume of mucus is over the safe capacity of the mucus cup during use of the device, or if you see mucus dripping out of the air vent on the back side of the collar, please follow instructions below

- Be sure that the upper and lower covers are closed firmly.
- Remove the silicone tip and mucus cup.
- Have the collar immersed in clean water as shown. Press the button for 15 seconds and the inner pump will be cleaned.
- The water flows in and out of the inner pump of the aspirator in the direction as shown below in picture 4.
- Change the water and repeat step 1-3 several times if required.
- Remove the aspirator from water once the cleaning is completed. Keep pressing the button for approximately 30 seconds until the inner pump is empty and dry.
- Dry the collar and reassemble the aspirator.



Operation, Storage & Transportation Environment Information

Operation Environment	Temperature: 5°C~40°C Humidity: 15% ~ 93% Atmospheric Pressure: 700~1060 hPa
Storage & Transportation Environment	Temperature: -10°C~50°C Humidity: \leq 93% Atmospheric Pressure: 700~1060 hPa

8