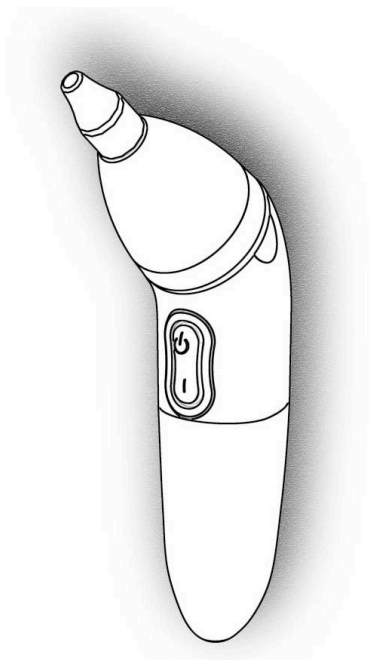


## **Washable Electric Nasal-Aspirator for Children**



### **Operating Instructions**

Please read the following instructions carefully before you start to use the **Snotty One Nasal Aspirator**.

Fully washable, leaves small chance for bacteria to remain and multiply in aspirator.  
Lightweight and ergonomically shaped, with powerful and steady flow.  
Practical, can be used any time and anywhere.

## Product Characteristics

- Aspirates in seconds.
- Powerful, safe and steady flow.
- Low noise.
- Handy, lightweight and ergonomically shaped.
- Easy-to-use.
- Washable - water-resistant, the machine can be washed with water and the cup can be boil or steam sterilized. (not suitable for microwave sterilization)
- Convenient – Battery powered.
- Long Lasting - Two AA alkaline-batteries for hundreds of operations. (about 5 sec for average operation)
- 12 months manufacturer warranty.

## \*\* Safety Precautions \*\*

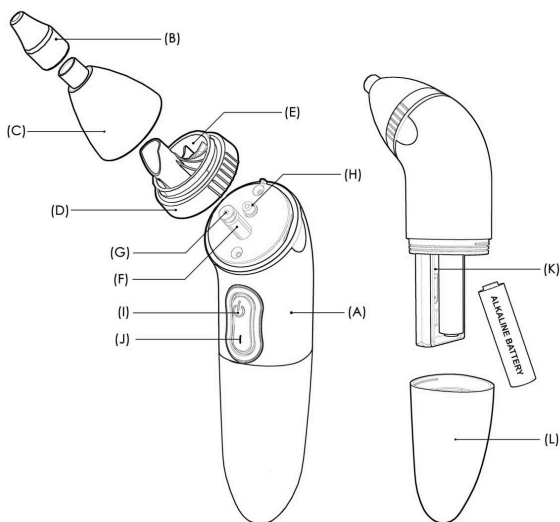
- **Snotty One** is designed to remove nasal mucus from nasal cavity only. Do not apply to use it for any other purpose.
- Before use, make sure that the silicon plastic nozzle is firmly mounted on cup (C).
- **Snotty One** should be used by adults only.
- **Snotty One** is designed for domestic use.

## Cautions

1. Wash your **Snotty One** after EVERY use.
2. Do not submerge or wash without assuring that the battery compartment lid is firmly closed and sealed.
3. Wipe case dry if you intend to open the battery lid.
4. Do not remove the fixed screws and rubber parts, or you may damage the delicate water-resistant seal.
5. Do not wash and clean **Snotty One** with harsh chemicals or solvents.
6. Stop using **Snotty One** if it has been damaged or if the unit has been deformed.

## Warnings

1. **Snotty One** is designed for competent adult use only.
2. Do not use **Snotty One** for any other purpose other than sucking mucus from the nasal cavity.
3. It is not recommended to over use **Snotty One**; a few seconds will be enough to remove the excess mucus.
4. Do not wedge the nozzle deep into the nostril; light application will be enough for **Snotty One** to work.
5. Do not use **Snotty One** if there are any wounds, symptoms of inflammation or bleeding in the nose.
6. Be sure to clean **Snotty One** before and after use. Refer to <Cleaning **Snotty One**>.
7. Store **Snotty One** in a dry and cool place. Remove the batteries if you plan not to use **Snotty One** for a longer period of time.
8. **Snotty One** is not to be used for medical purposes.  
**If there is a health related problem or if symptoms persist, please consult your health professional.**



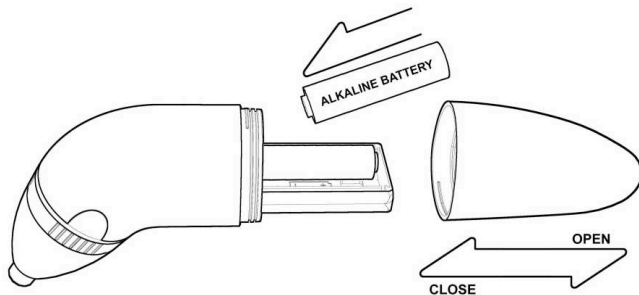
## Part Names

- |                        |                           |
|------------------------|---------------------------|
| A. Body                | B. Silicon plastic nozzle |
| C. Cup                 | D. Base                   |
| E. Collecting chamber  | F. Air hole plug          |
| G. Inlet hole          | H. Outlet hole            |
| I. ON-button           | J. OFF-button             |
| K. Battery compartment | L. Battery cover          |

## Operating Instructions

Clean the component parts as described in section <Cleaning **Snotty One** > before use.

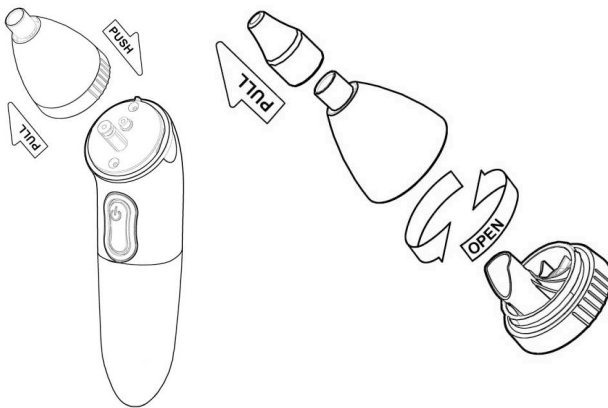
### 1. Installing the battery



- (1) Remove the battery compartment lid. (Wipe the case first if you have washed the unit and it is still wet.)
- (2) Insert two AA alkaline batteries. (note polarity)
- (3) Firmly re-attach the battery compartment lid.

**\* Remove the batteries if the machine is not used for a longer period of time.**

## 2. Removing and mounting the cup



- (1) Lift the cup to remove it.
- (2) Lift the silicon plastic nozzle to remove it.
- (3) Turn the base as indicated by the arrow to open it.
- (4) Reverse the above steps to mount the parts.

## 3. Power on/off

Press the upper side of the rubber button (I) to turn on the power, or the under side (J) to it off.

## 4. Using Snotty One

- (1) Mount the Cup and Silicon plastic nozzle firmly.
- (2) Turn on the power.
- (3) Place the Silicon plastic nozzle at the outer side of your child's nostril for about 3 sec.
- (4) Observe the mucus flow into the nozzle or cup.
- (5) Clean **Snotty One** as described in section below.

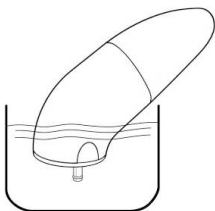
## Cleaning Snotty One

**Remove the Cup as described in <Operating Instructions> before you start cleaning Snotty One.**

### 1. Cleaning the cup and the silicon plastic nozzle

- (1) Remove the Cup, Base and Silicon plastic nozzle and clean them thoroughly with water
- (2) Sterilize by boiling water or steam not microwave.

### 2. Washing the case and the inner pump



- (1) Make sure that the battery compartment lid is firmly closed.
- (2) Remove the Cup.
- (3) Soak **Snotty One** in a pot of warm soapy water.  
Turn on the power to clean the inner pump.  
(The rotation rate of the pump is 5,000 rotation/sec,  
soaking and running the unit for 5 seconds will be enough to clean the inner pump.)
- (4) Change the water and repeat the cleaning steps with clean detergent free water.
- (5) Clean the case externally.
- (6) Wipe the case dry with a soft cloth.

## Specifications

- Power:** Two (2) AA batteries (not supplied)  
\*Alkaline batteries are recommended.
- Suction:** Approx. 50 kPa  
(will vary with the power remaining)
- Size:** 17.5 (L) x4 (W) x4.2 (H), cubic cm
- Weight:** 145 g (without battery)

SNOTTY

PO Box 111

Labrador QLD 4215

[www.snotty.com.au](http://www.snotty.com.au)

Feedback and customer service at:

[info@snotty.com.au](mailto:info@snotty.com.au)

